

Overview

The Follett Infigo™ allows you to easily print circulation and fine receipts. It includes a mounting bracket, USB cable and all of the required drivers in the box.

Setting Up the Follett Infigo	2
Installing the printer driver	6
Configuring your browser for Destiny	8
Configuring InfoCentre	14
Configuring Circulation Plus	14
Mounting the Infigo vertically	15

Application Support

The Follett Infigo is compatible with the following software applications:

Application	Operating System	Supported browsers
Destiny	Windows® XP * Windows® Vista *	Internet Explorer® v6.x, 7.x, and 8.0 Mozilla® Firefox® v2.x and 3.0
Circulation / Cataloging	Windows® XP	
InfoCentre 3.2	Windows® XP Windows® Vista * Mac OS® 10.4, 10.5	
Spectrum	Windows® XP	
Athena	Windows® XP	

* 32-bit and 64-bit versions

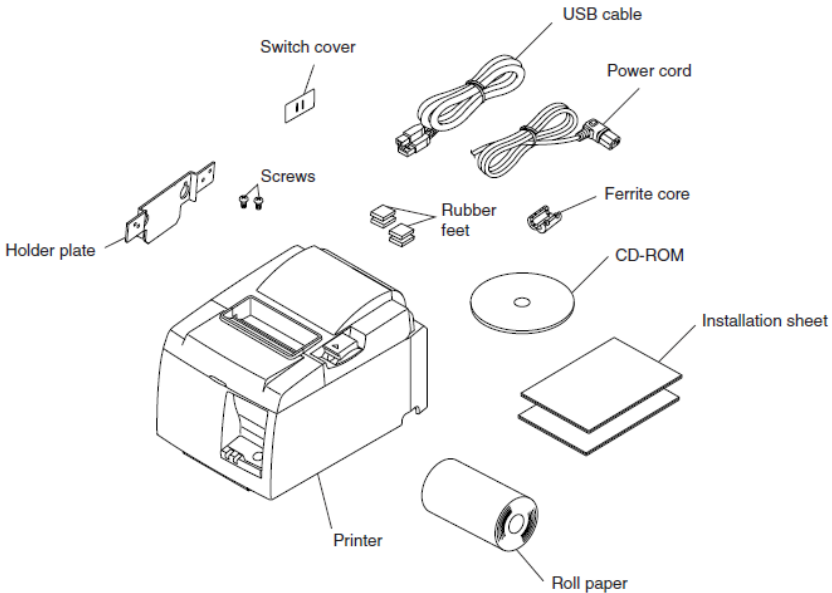
Setting Up the Follett Infigo

To set up the Follett Infigo, you'll need to physically connect the printer to a workstation, install the printer driver on the workstation, and either change some settings in your browser (for Destiny) or set up the printer in your application (Circulation Plus or InfoCentre).

Using the included mounting bracket, you can also hang the Follett Infigo vertically to save counter space.

Connecting the printer to your workstation

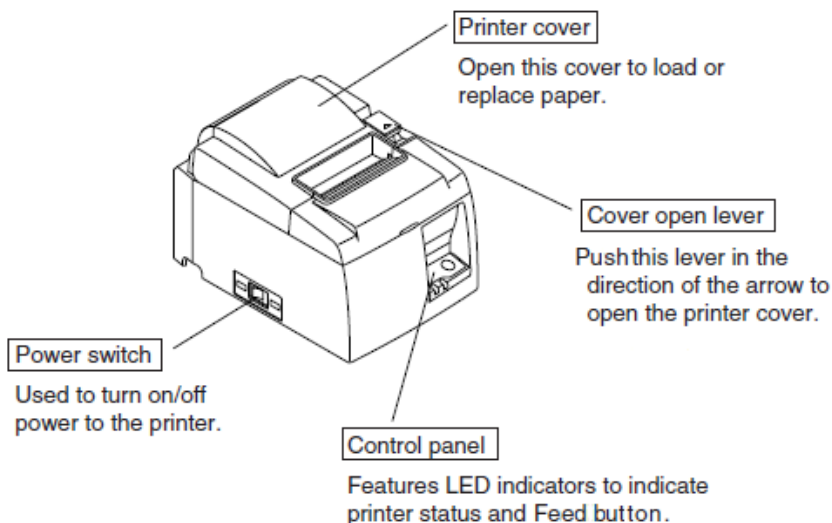
1. Unpack the printer and verify the box contents:



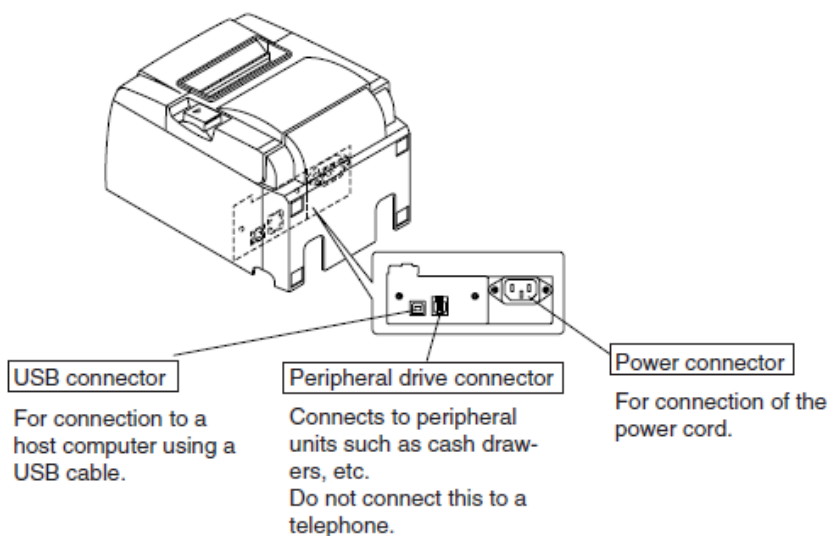
Getting Started with the Follett Infigo

2. Familiarize yourself with the main parts of the printer.

Front:

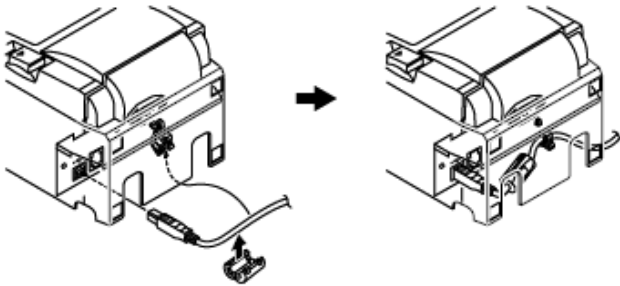


Back:

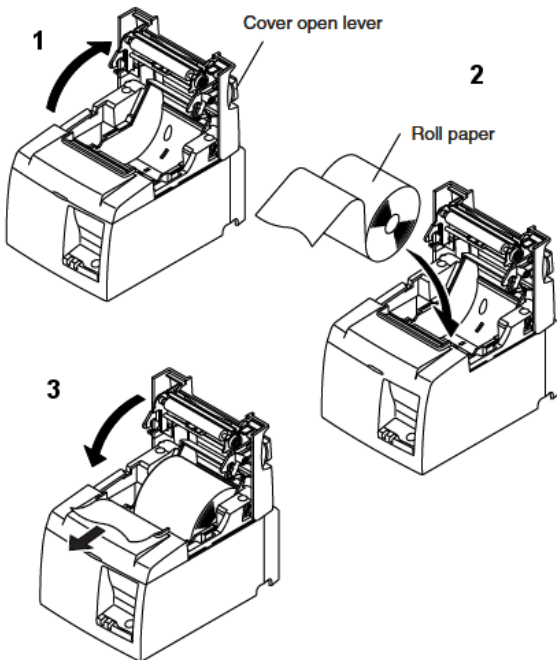


Getting Started with the Follett Infigo

3. Snap the ferrite core onto the USB cable, and then plug it into the back of the printer.

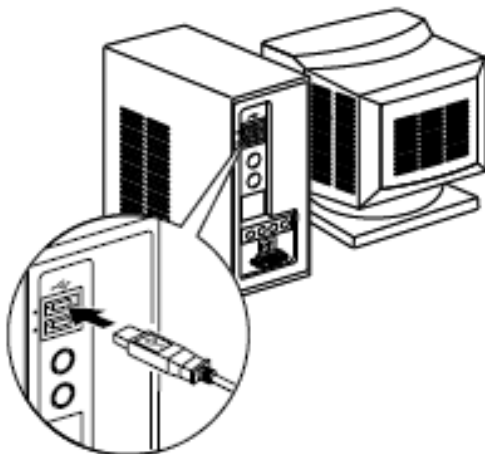


4. Open the cover by pushing the lever, insert the paper roll, pull out a small amount of paper, and then close the cover.

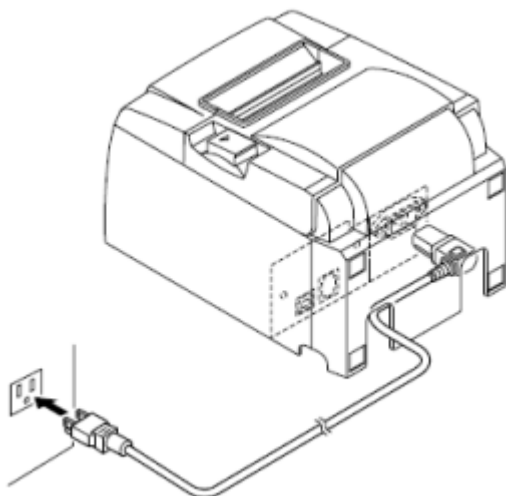


Getting Started with the Follett Infigo

5. Connect the USB cable to the computer.



6. Connect the power cord to the printer, and then plug the cord into the outlet.



Installing the printer driver

Windows® XP or Windows® Vista

1. After you've connected the Follett Infigo to a USB port on the workstation, turn on the Infigo.
The **Found New Hardware Wizard** opens.
2. Insert the CD that came with the Infigo.
3. When the Wizard asks, **Can Windows connect to Windows Update to search for software**, select **No, not this time**.
Then, click **Next**.
4. On the next dialog, select **Install from a list or specific location**.
Then, click **Next**.
5. On the next dialog, **Please choose your search and installation options**, select **Search for the best driver in these locations**, and then select the **Search removable media** check box.
Then, click **Next**.
6. If a dialog opens, stating that the software "has not passed Windows Logo testing to verify its compatibility with this version of Windows", click **Continue Anyway**.
7. The next dialog states **The wizard has finished installing the software for Star TSP100 Cutter (TSP143)**.
Click **Finish**.

Setting up the printer properties

1. Open **Start > Settings > Control Panel > Printers and Faxes**.
2. Locate and right-click **Star TSP 100 Cutter (TSP 143)**.
3. To set the Infigo as the default printer for this workstation, choose **Set as Default Printer**.
4. Right-click it again and choose **Properties**.
5. Click **Printing Preferences**, and then click **Advanced**.
6. Adjacent to **Paper Size**, select "72mm x Receipt".
7. Click **OK**, click **OK**, and click **OK** again.

Getting Started with the Follett Infigo

Mac OS® X (InfoCentre only)

1. After you've connected the Follett Infigo to a USB port on the workstation, insert the driver CD.
A CD icon appears on the desktop.
2. To launch the installer, double-click the following items in order:
The CD icon
the **Mac** folder
the **CUPS** folder
the **starcupsdrv-3.0.0_mac_20090130.zip** file
the **starcupsdrv-3.0.0_mac** folder
the **Driver** folder
and finally the **starcupsdrv-3.0.0.pkg**.
3. Click **Continue** (you may need to do this twice).
4. Accept the default location, and then click **Install**.
5. Enter your administrator password, if requested.
6. Click **Close** when the installation finishes.
7. Turn on the Infigo.

Setting up the printer

1. Open **System Preferences > Print & Fax**.
2. On the left-hand side, click the plus (+) icon.
3. Select **Star TSP143 (STR_T-001)**, and then click **Add**.
4. Clear **Share this printer**, and then exit **Print & Fax**.

Now that you've set up the workstation, you'll need to configure your application—Destiny, Circulation Plus or InfoCentre—for the Infigo.

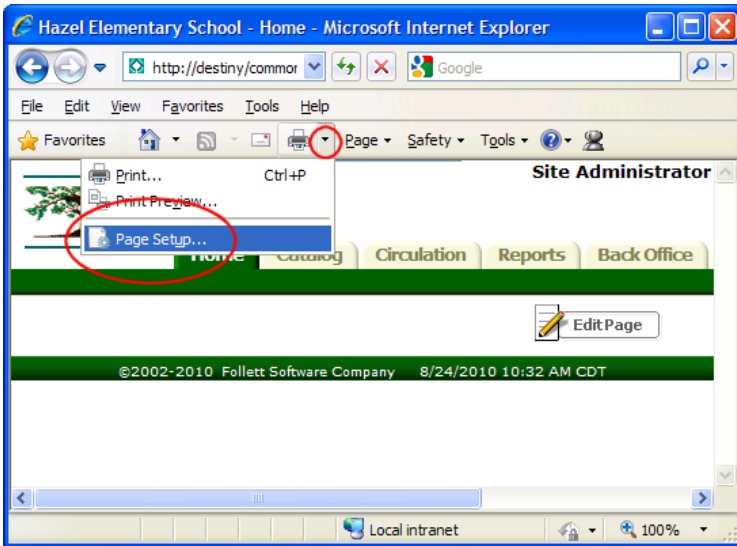
Configuring your browser for Destiny

To print receipts correctly, you need to clear the headers and footers, set the printer margins, and unblock the popup window in your browser. The receipt window is actually a popup window.

Important: If you have other popup blockers on your workstation, you may need to unblock Destiny or add it to your exceptions, or white, list.

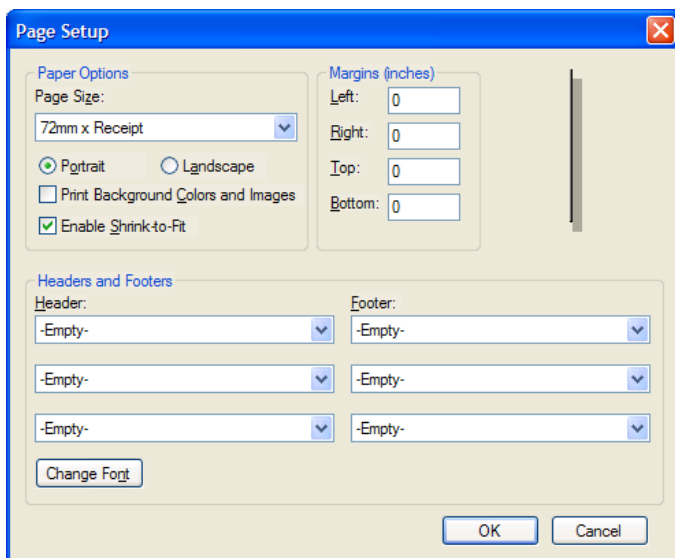
Setting up Internet Explorer version 7 or 8

1. If you have any Internet Explorer windows open on your workstation, close them so that the printer properties you just set, above, take effect.
2. Open Internet Explorer.
3. From the side menu, menu bar, or command bar, open **Page Setup**.



Getting Started with the Follett Infigo

- For IE version 8: On the **Page Setup** dialog that opens, verify that the **Page Size** is set to "72mm x Receipt". Set all four **Margins** to "0". Set all the **Headers and Footers** to "-Empty-". Then, click **OK**.



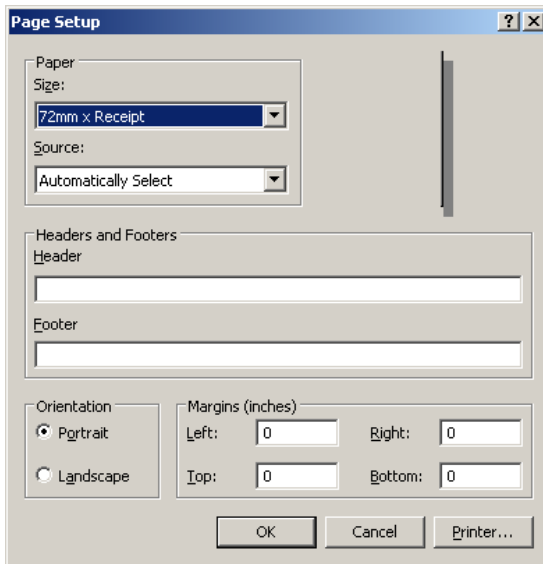
Getting Started with the Follett Infigo

For IE version 7: On the **Page Setup** dialog that opens, verify that the **Paper Size** is set to "72mm x Receipt".

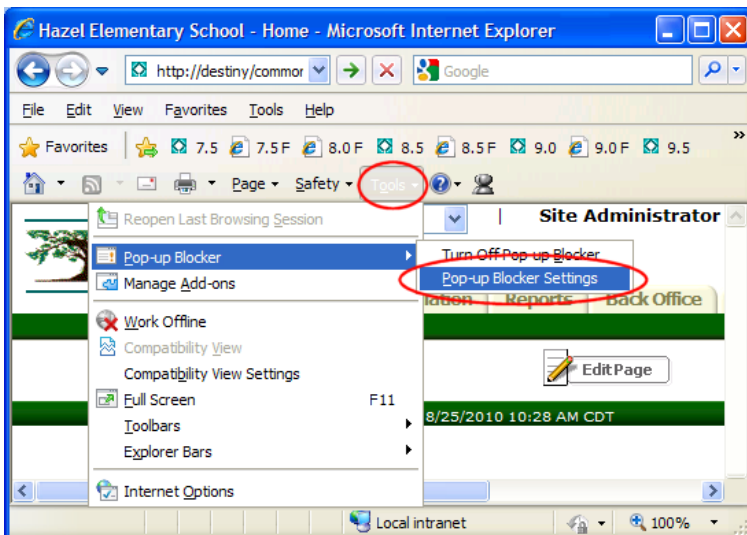
Clear the **Header** and **Footer** boxes.

Set all four **Margins** to "0".

Then, click **OK**.



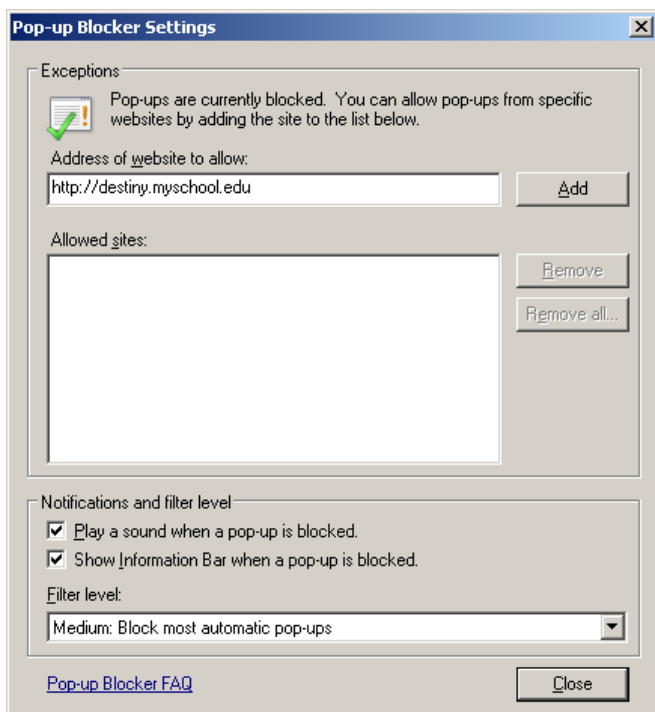
5. Choose **Tools > Pop-up Blocker > Pop-up Blocker Settings**.



Getting Started with the Follett Infigo

6. Enter your Destiny server's address in the **Address of website to allow** box, and then click **Add**.

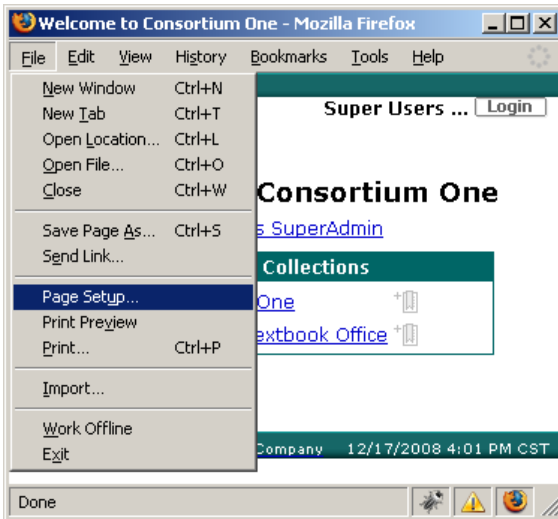
The address will appear in the list of allowed sites.



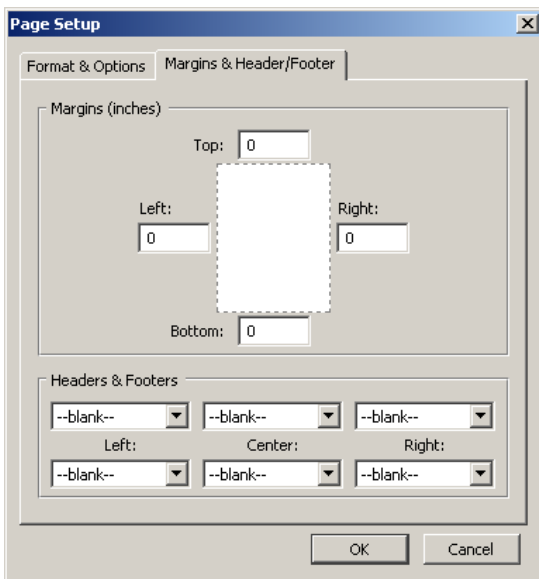
7. Click **Close**.

Setting up Firefox version 3

1. Choose **File > Page Setup**.

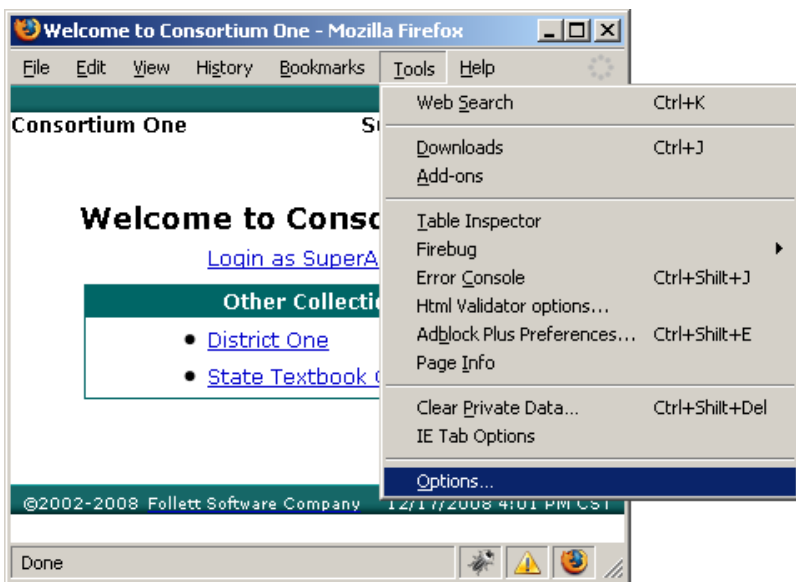


2. On the **Margins & Header/Footer** tab, do the following:
Set all **Margins** to "0".
Set all **Headers & Footers** to "--blank--".
Click **OK**.

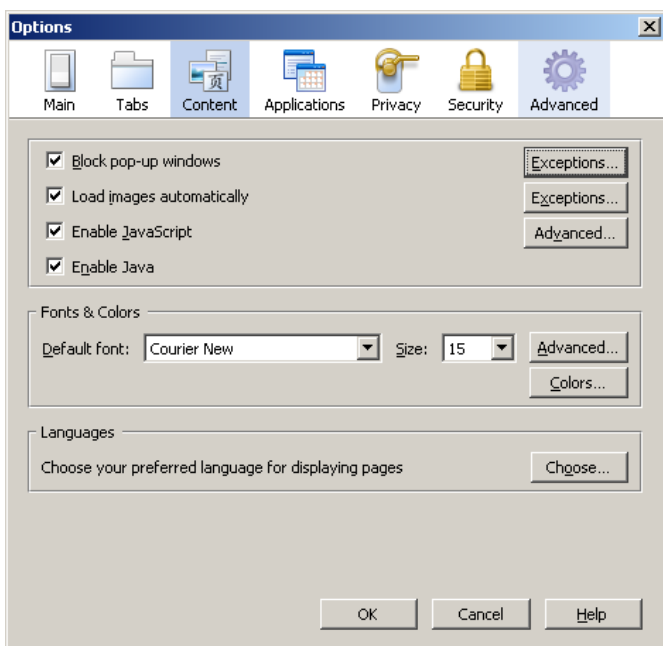


Getting Started with the Follett Infigo

- From the menu bar, choose **Tools > Options**.

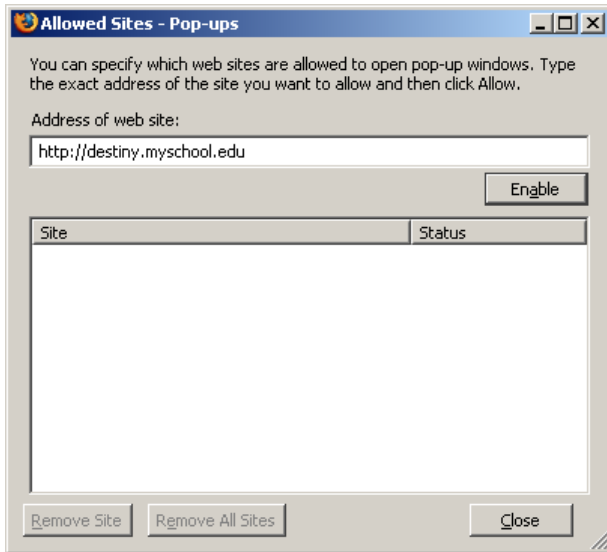


- On the **Content** tab, adjacent to **Block pop-up windows**, click **Exceptions**.



Getting Started with the Follett Infigo

5. Enter your Destiny server's address in the **Address of web site** box, and then click **Enable**.
The address appears in the list of allowed sites.



6. Click **Close**.

Configuring InfoCentre

1. Open the InfoCentre client.
2. Open **Admin > Circulation > Settings > Slip Printing**.
3. From the **Slip Printer** menu, select your printer:
 - On Windows, select **Star TSP100 Cutter (TSP143)**.
 - On Macintosh, select **TSP143 (STR_T-001)**.
4. Click **Save**, and then **OK** on the confirmation message.

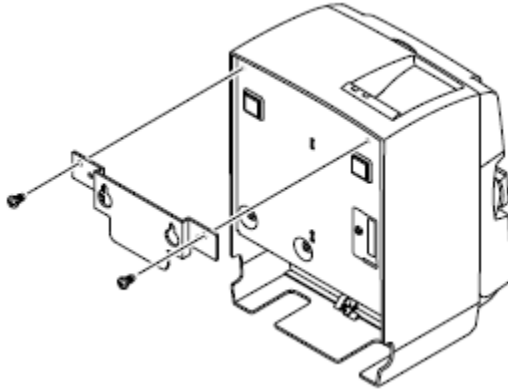
Configuring Circulation Plus

1. Open Circulation Desk.
2. From the menu bar, choose **File > Receipt Printer Setup**.
3. From the **Printer Name** menu, select **Star TSP100 Cutter (TSP143)**.
4. Click **OK**.

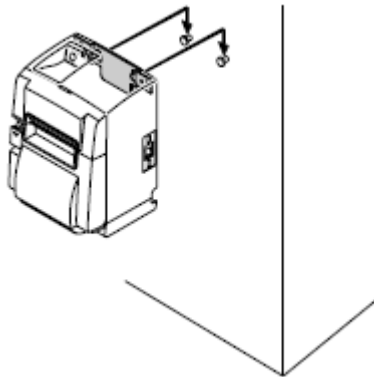
Getting Started with the Follett Infigo

Mounting the Infigo vertically

1. Hold the Holder plate against the wall (or other vertical surface) and mark the location of the inner set of holes.
2. Install the appropriate screws (not included) in the wall, leaving enough space behind the screw heads for the Holder plate.
3. Securely attach the Holder plate to the printer with the two screws (included).



4. Position the printer over the screws on the wall, and then slide it downward to set it in place.



Your Infigo is now ready for use.

Getting Started with the Follett Infigo