



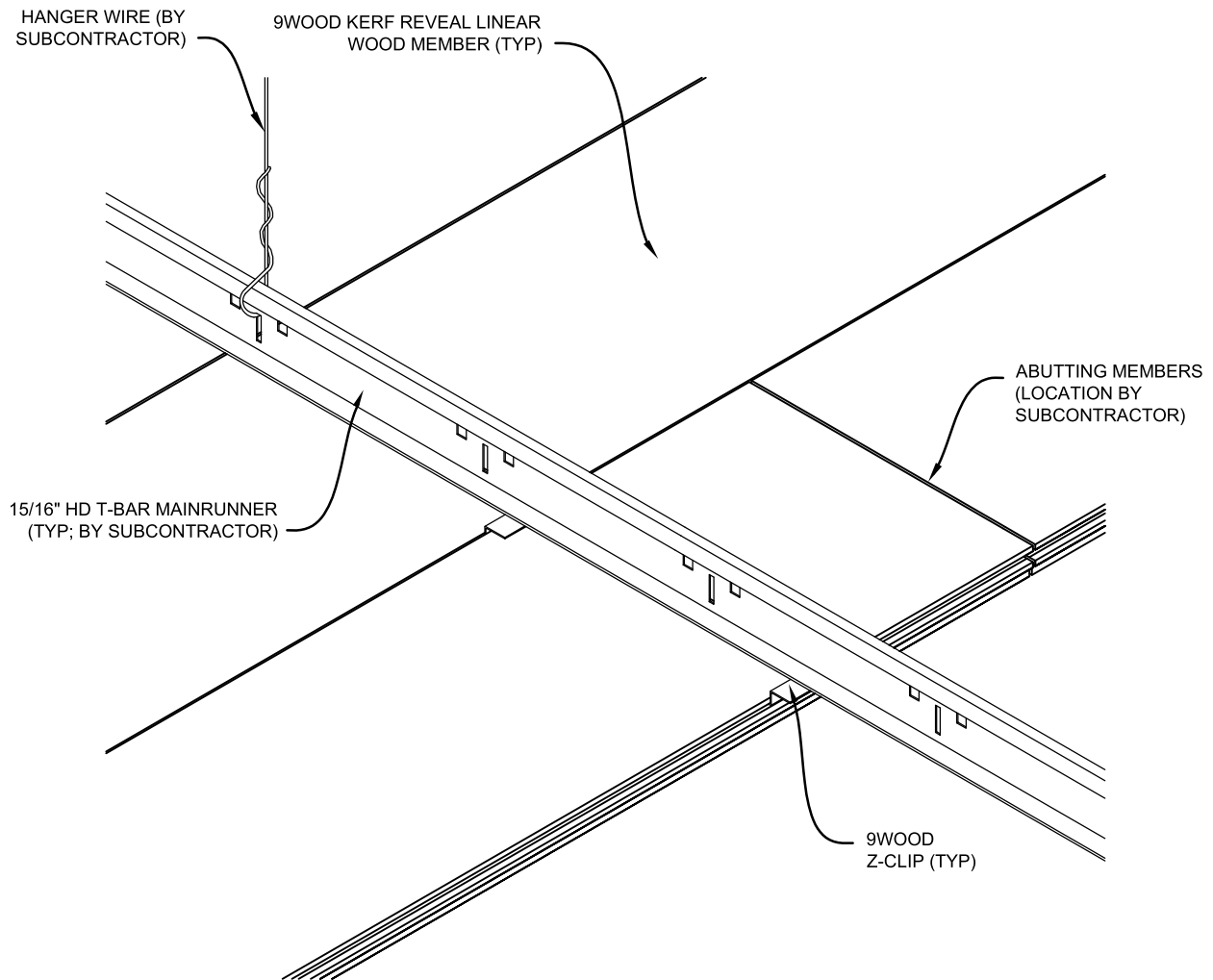
2700 Data Sheet



SERIES: 2000 LINEAR WOOD

STYLE: 2700 KERF REVEAL LINEAR

Overview



The **2700 Kerf Reveal Linear** wood ceiling offers a design where the individual wood members abut with a thin reveal between each plank. Members are installed randomly to create a planked look. Due to required fabrication tolerances for the kerf reveal joinery, only engineered veneered wood composites are used. Member lengths are 8' to maximize yield of veneered sheet goods.

Attachment for the Kerf Reveal Linear is via progressive install, utilizing the 9Wood Z-Clip.





2700 Data Sheet



SERIES: 2000 LINEAR WOOD

STYLE: 2700 KERF REVEAL LINEAR

Product Data

Application

The Kerf Reveal Linear provides a planked look and creates a “wood floor-on-the-ceiling” appearance with clear delineations at board edges. Access can be through strategically located access panels or from ceiling perimeters. Members are secured to T-Bar main runners progressively with the 9Wood Z-Clip.

Performance

Acclimatization

Kerf Reveal Linears must be cared for in a controlled interior environment (RH 25%-55% max; temp. 60°-80°) and installed only after reaching equilibrium moisture content. Should the building fall outside these limits, consult 9Wood for our 3 Tests/3 Tracks Acclimatization Advisory.

Acoustics

The Kerf Reveal Linear is considered acoustically reflective.

Fire Rating

Individual members and components can be coated with Class I (A) Fire Retardant chemicals (veneered particleboard use FR formulas). Particular species or styles have not been tested.

LEED

Kerf Reveal Linears may qualify toward MR-3, MR-4.1/4.2, MR-5.1/5.2, MR-6, MR-7, IEQ-4.2 or IEQ-4.4. As all products are custom-fabricated, LEED credit opportunities are project by project. Please contact 9Wood for specifics.

MEP

The Kerf Reveal Linear permits MEP penetrations in the ceiling's surface. Supplemental suspension may be required at penetrations. Fixtures and diffusers must be independently supported.

Seismic

Clips are typically mechanically screwed to T-Bar for seismic compliance. Please consult local code or a licensed engineer for any additional requirements.

Species & Finishes

9Wood can offer both domestic and imported species for the Kerf Reveal Linear. Clear, matte sheen finish is standard; custom color matches and opaque finishes are available.

Suspension

Kerf Reveal Linears are directly attached to 15/16” heavy duty T-Bar main runners. Main runners are installed 2’ on center, depending on system weight.

System Weight

Kerf Reveal Linears typically weigh 3 pounds per square foot.



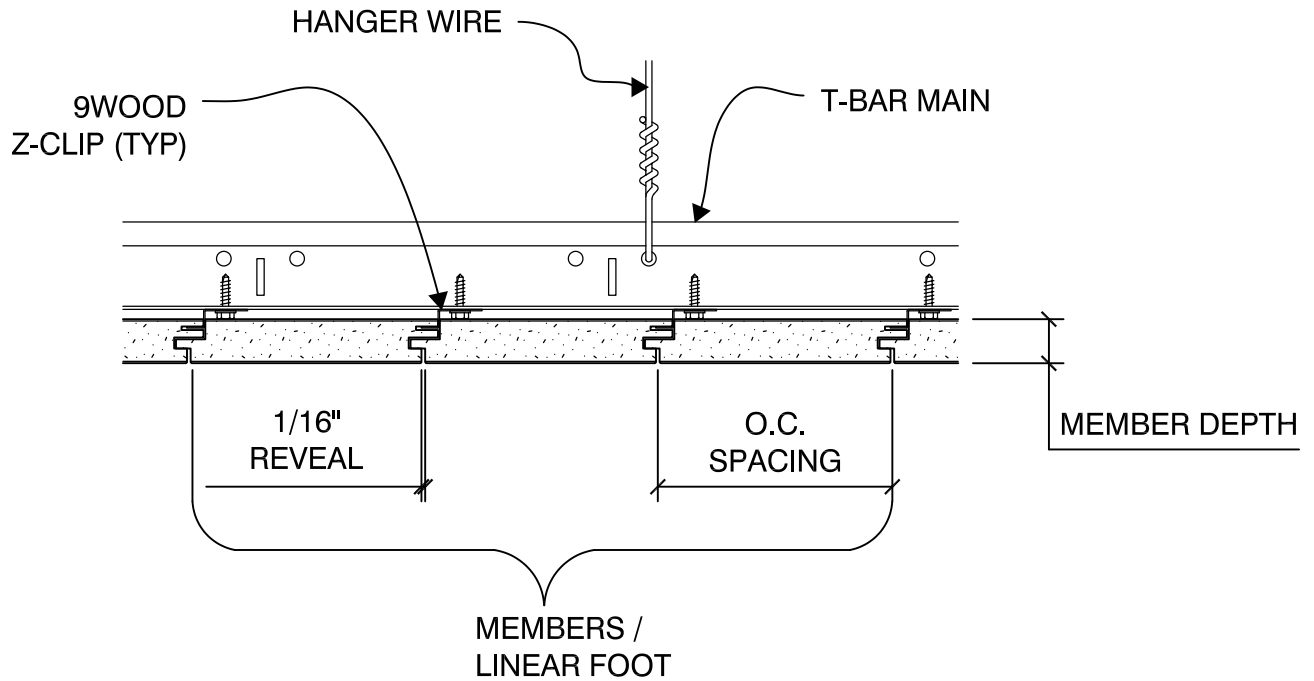
2700 Data Sheet



SERIES: 2000 LINEAR WOOD

STYLE: 2700 KERF REVEAL LINEAR

Typical Specifications



SKU Table

Depth	O.C Spacing	Members per Linear Foot		
		2	3	4
3/4"	3"	2714-4		
3/4"	4"	2715-3		
3/4"	6"	2717-2		
3/4"	8"	2719-2		

Additional width, depth, and M/LF options may be available. Please check with 9Wood if you don't see the combination that you have in mind.



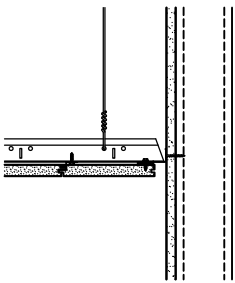
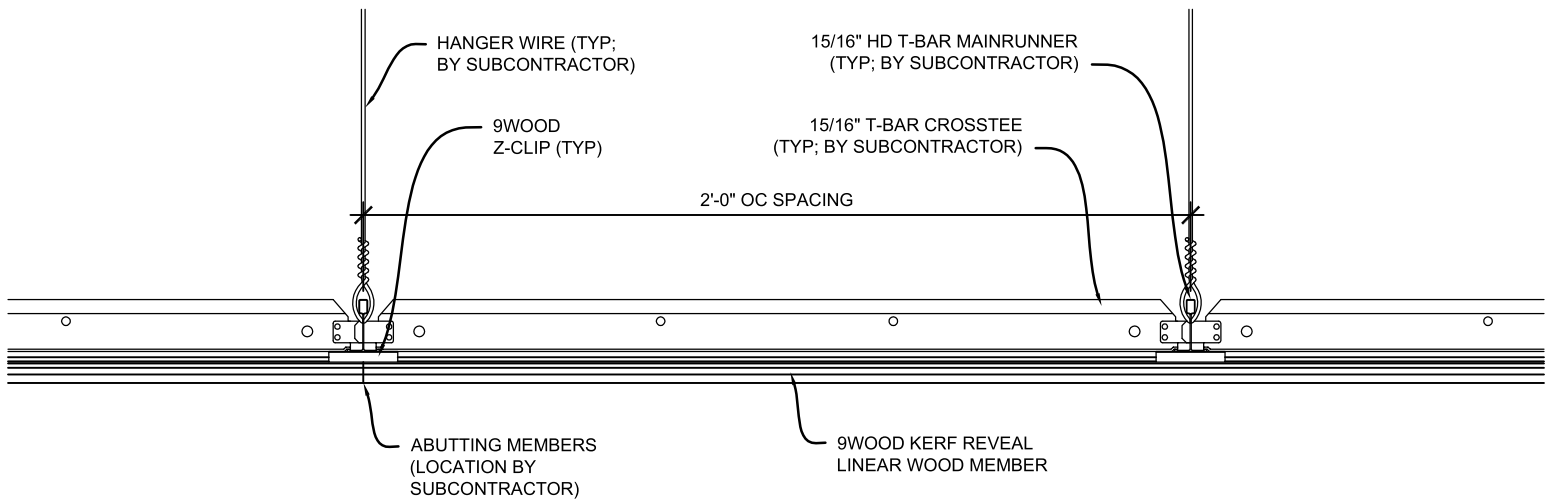
2700 Data Sheet



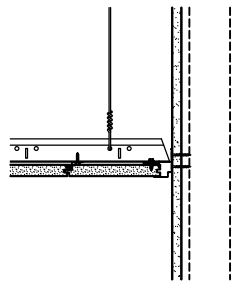
SERIES: 2000 LINEAR WOOD

STYLE: 2700 KERF REVEAL LINEAR

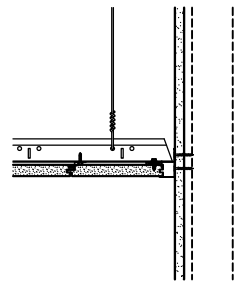
Perimeter Conditions and Suspension



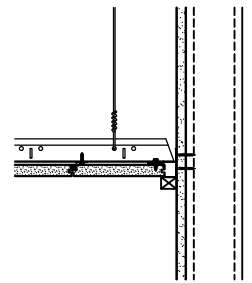
FLOATING OPEN REVEAL



METAL TRIM w/ SHADOW MOLDING



METAL TRIM w/ WALL ANGLE



WOOD TRIM w/ WALL ANGLE