



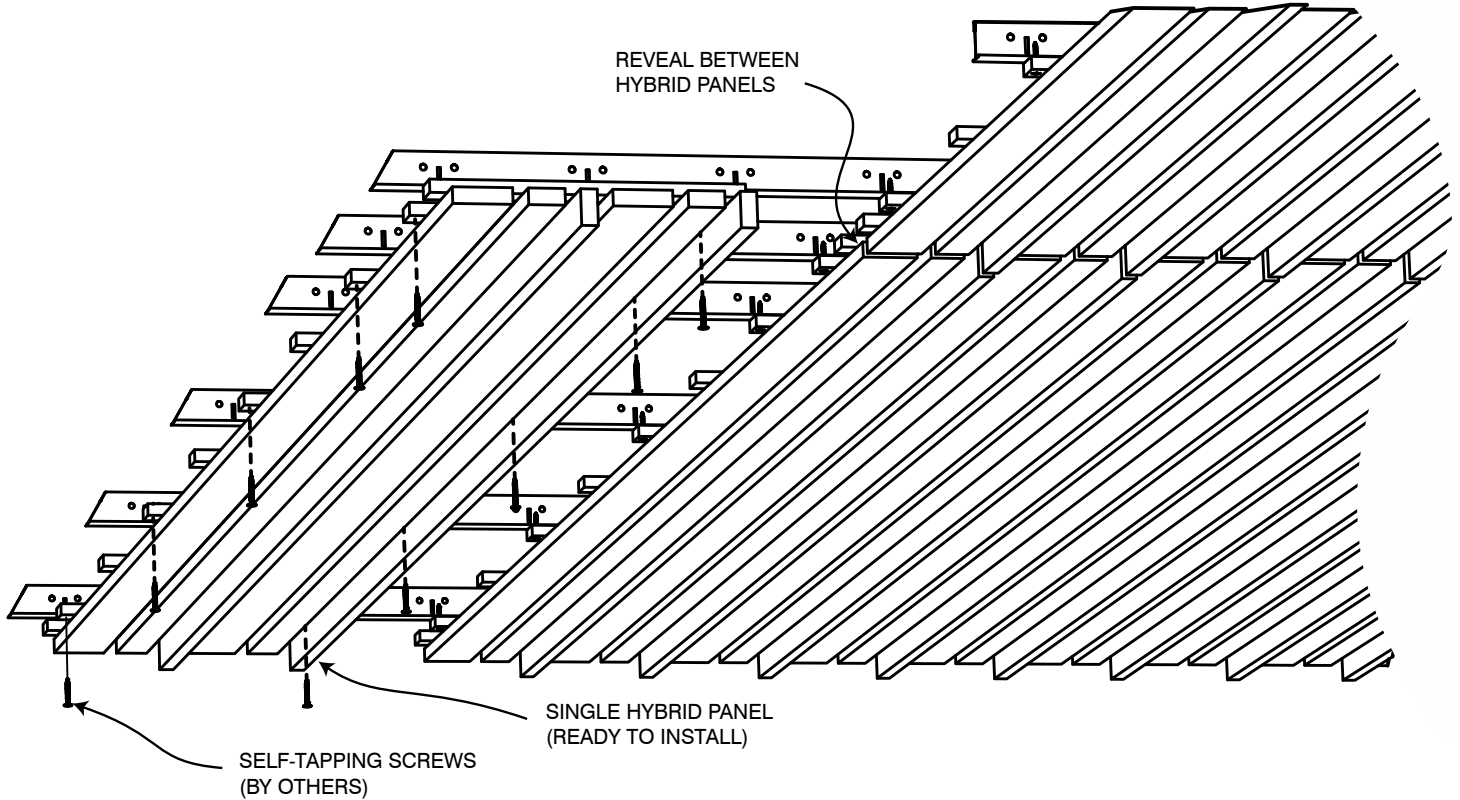
## 9100 Data Sheet



SERIES: 9000 HYBRID

STYLE: 9100 HYBRID PANEL

## Overview



The **Fast>Track 9100 Hybrid Panel** offers designers unique textures and options for wood ceilings that ship in 3 weeks. With four configurations, panels can be arranged for limitless variation and patterns. Individual wood members vary in both size and orientation and can be custom stained to match any color on solid Western Hemlock. Panel width is 12" and standard nominal panel lengths are 4' up to 12'. Hybrid Panels are custom fabricated prior to shipment and are laid out in the ceiling or wall according to your specified pattern. This product is a preferred design in areas that require seismic compliance. Best of all, the Hybrid Panels ship in 3 weeks with Fast>Track.

**Attachment** for the Hybrid Panel is via screws fastened directly through the backer into standard T-Bar grid. This provides basic accessibility for each panel.

Your Wood Ceiling Experts. Design to Delivery.





## 9100 Data Sheet



SERIES: 9000 HYBRID

STYLE: 9100 HYBRID PANEL

# Product Data

## Application

The Hybrid Panel uses a pre-assembled panel fabrication process. This product can be installed throughout the country and is the preferred design in areas requiring seismic compliance. Full panel access is available by means of removing attachment screws hidden in reveals.

## Performance

### Acclimatization

Hybrid Panels must be cared for in a controlled interior environment (RH 25%-55% max; temp. 60°-80°) and installed only after reaching equilibrium moisture content. Should the building fall outside these limits consult 9Wood, Inc. for our 3 Tests/3 Tracks Acclimatization Advisory.

### Acoustics

The Hybrid Panel can enhance acoustics via sound absorbing material placed over open reveals within the T-Bar grid. Insulation is typically provided locally.

### Fire Rating

Individual members and components can be treated with Class I (A) Fire Retardant chemicals (solid wood uses FR coatings).

### LEED

Hybrid Panels may qualify toward MR-3, MR-4.1/4.2, MR-5.1/5.2, MR-6, MR-7, IEQ-4.2 or IEQ-4.4. As all products are custom-fabricated, LEED credit opportunities are project by project. Please contact 9Wood, Inc. for specifics.

### MEP

The Hybrid Panel permits MEP penetrations in the ceiling's surface. Cut panels may require supplemental reinforcement. Fixtures and diff users must be independently supported.

### Seismic

Hybrid Panel styles provide seismic code compliance by means of mechanical direct screw attachment to T-Bar grid via the cross-piece backer. Consult local code for any additional requirements or a licensed engineer.

### Species & Finishes

Fast>Track Hybrid Panels are available exclusively in Western Hemlock but can be stained to match any color. Clear, satin sheen finish is standard; custom stain matches are always encouraged.

### Suspension

Hybrid Panels are directly attached to 15/16" heavy duty T-Bar main runners. Main runners are typically 2' on center.

### System Weight

Hybrid Panels typically weigh 2-4 pounds per square foot, depending on members per linear foot.

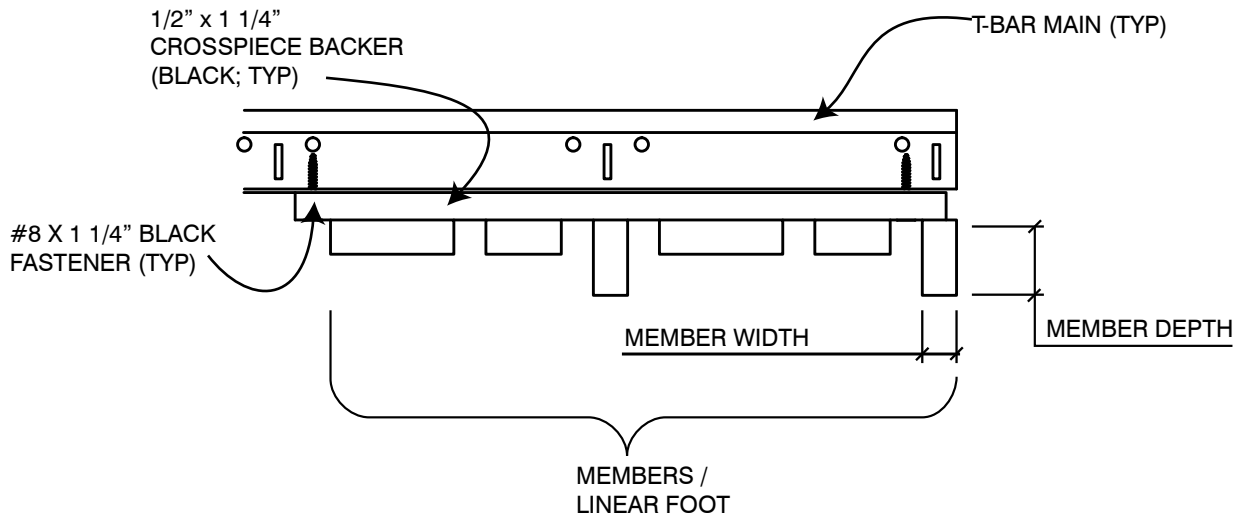


## 9100 Data Sheet

SERIES: 9000 HYBRID

STYLE: 9100 HYBRID PANEL

### Panel A: Typical Specifications



9100-A Product Breakdown Table

Orientation	Depth (Softwood)	Width	Quantity per Panel
			2
Vertical	5/8"	1 3/8"	X
Horizontal	5/8"	1 3/8"	X
Horizontal	5/8"	2 1/4"	X

\* Other width, depth and M/LF combinations available. Please inquire.

\*\* Please see 9wood.com for information on appropriate species selections.



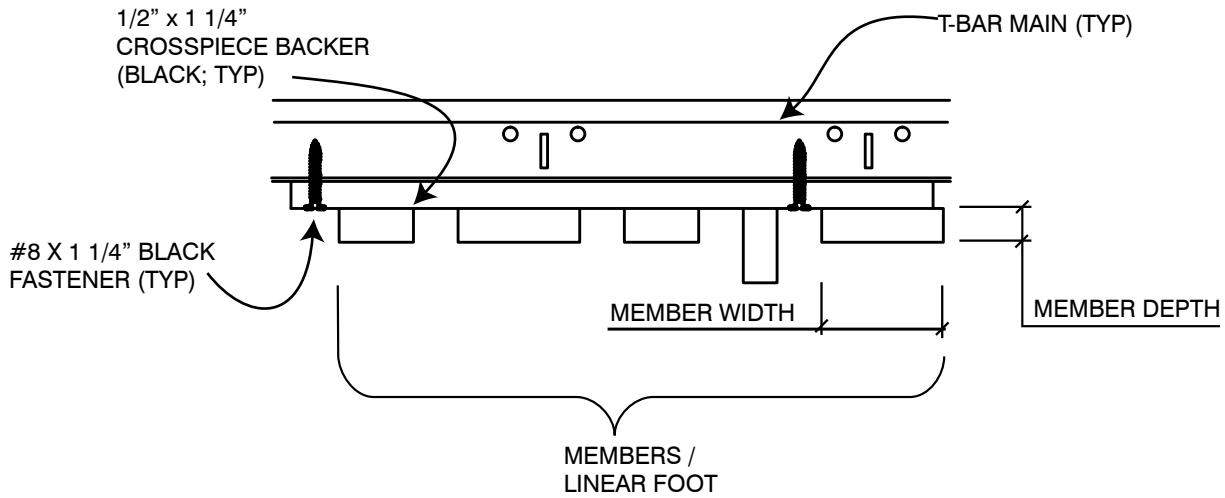
# 9100 Data Sheet



SERIES: 9000 HYBRID

STYLE: 9100 HYBRID PANEL

## Panel B: Typical Specifications



9100-B Product Breakdown Table

Orientation	Depth (Softwood)	Width	Quantity per Panel	
			1	2
Vertical	5/8"	1 3/8"	X	
Horizontal	5/8"	1 3/8"		X
Horizontal	5/8"	2 1/4"		X

\* Other width, depth and M/LF combinations available. Please inquire.

\*\* Please see 9wood.com for information on appropriate species selections.

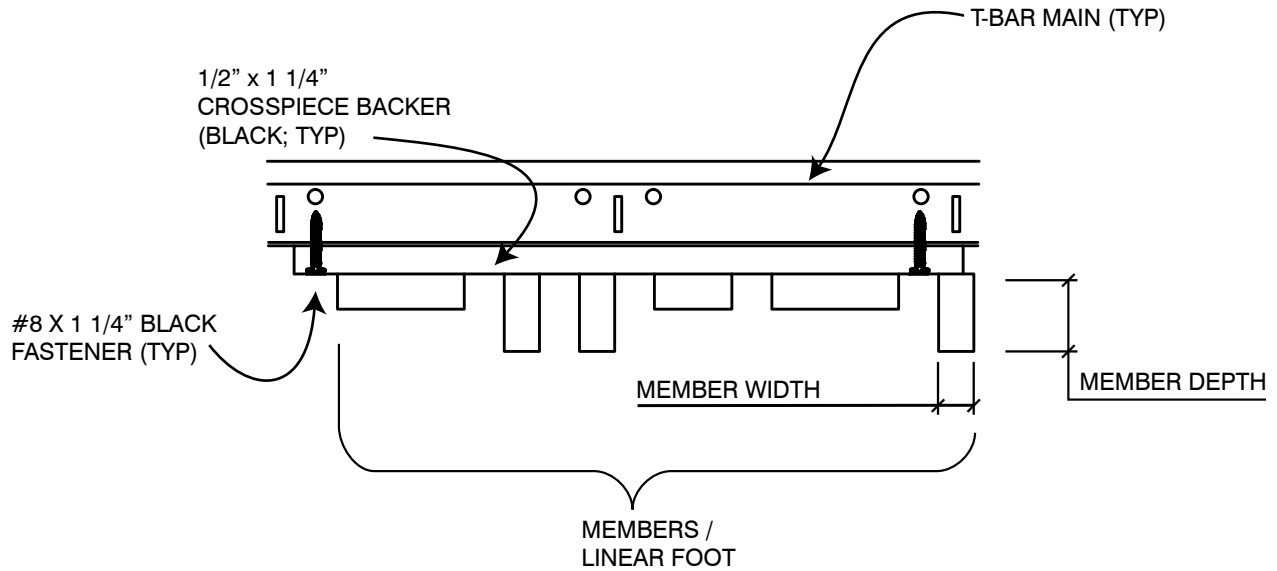


## 9100 Data Sheet

SERIES: 9000 HYBRID

STYLE: 9100 HYBRID PANEL

# Panel C: Typical Specifications



9100-C Product Breakdown Table

Orientation	Depth (Softwood)	Width	Quantity per Panel		
			1	2	3
Vertical	5/8"	1 3/8"			X
Horizontal	5/8"	1 3/8"	X		
Horizontal	5/8"	2 1/4"		X	

\* Other width, depth and M/LF combinations available. Please inquire.

\*\* Please see 9wood.com for information on appropriate species selections.

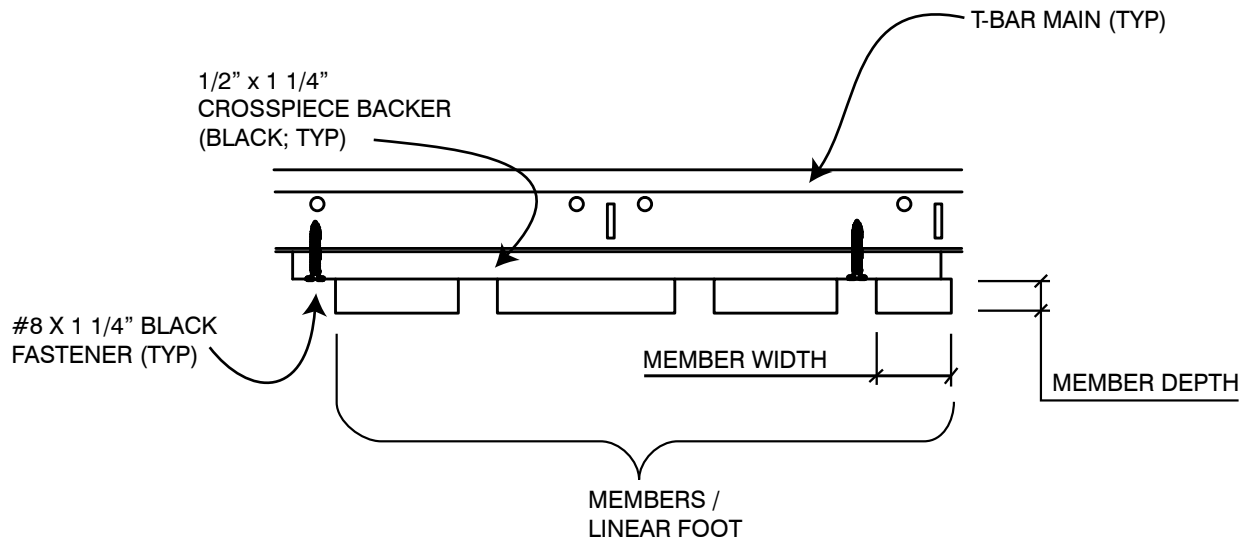


# 9100 Data Sheet

SERIES: 9000 HYBRID

STYLE: 9100 HYBRID PANEL

## Panel D: Typical Specifications



9100-D Product Breakdown Table

Orientation	Depth (Softwood)	Width	Quantity per Panel	
			1	2
Horizontal	5/8"	1 3/8"	X	
Horizontal	5/8"	2 1/4"		X
Horizontal	5/8"	3 1/4"	X	

\* Other width, depth and M/LF combinations available. Please inquire.

\*\* Please see 9wood.com for information on appropriate species selections.



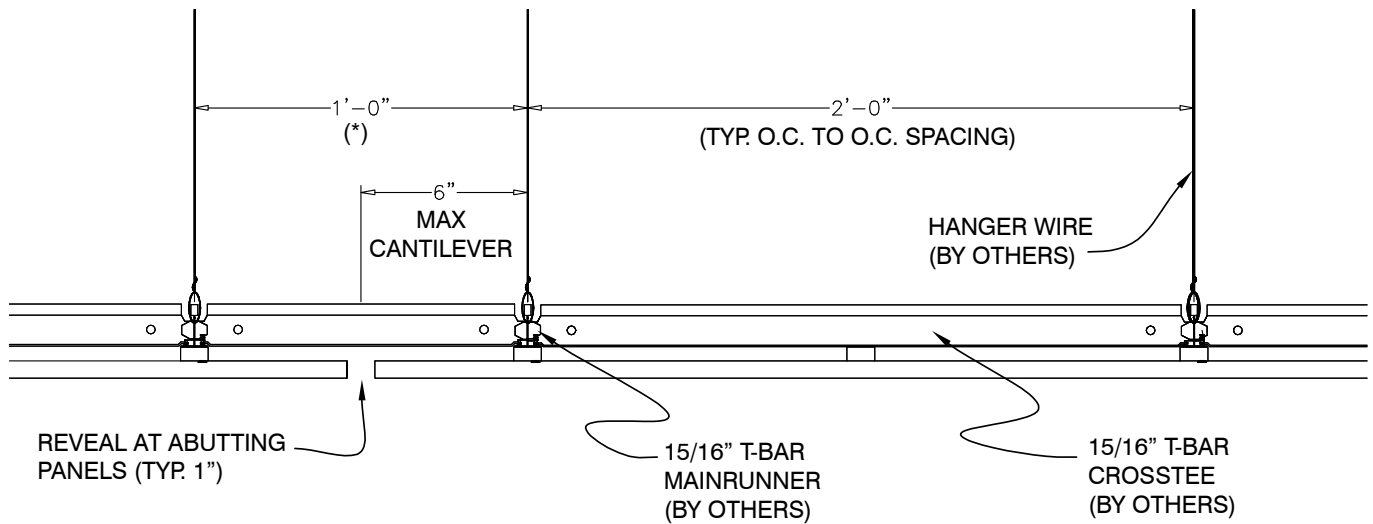
# 9100 Data Sheet



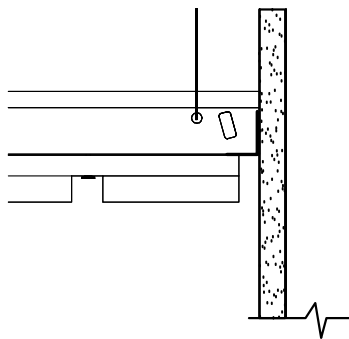
SERIES: 9000 HYBRID

STYLE: 9100 HYBRID PANEL

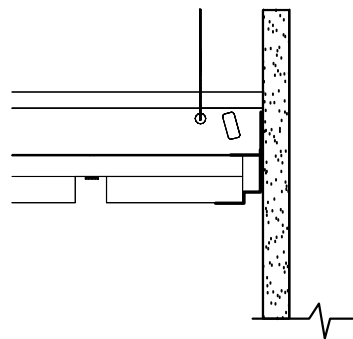
## Perimeter Conditions and Suspension



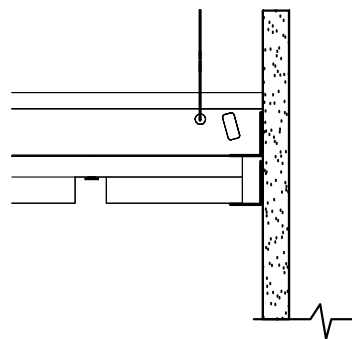
(\*) NOTE: A CENTER REVEAL TYPICALLY REQUIRES A CUSTOM O.C. SPACING IN THE SUSPENSION SYSTEM



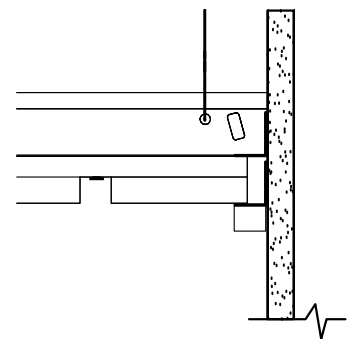
FLOATING:  
OPEN REVEAL



METAL TRIM:  
CONT. SHADOW STYLE  
WALL ANGLE



METAL TRIM:  
CONT. WALL ANGLE



WOOD TRIM:  
CONT. WALL ANGLE  
W/ WOOD TRIM